



An ISO 9001:2000 Registered Company

Avineon, Inc. Headquarters
4825 Mark Center Drive
Suite 700, Alexandria VA 22311
Tel: 703-671-1900 Fax: 703-671-1901
Email: info@avineon.com
URL: www.avineon.com

Florida Operations
15500 Light Wave Drive, Suite 200
Clearwater, FL 33609
727-539-1661

Avineon India Private Limited
605A, HUDA, Maitrivanam
SR Nagar, Hyderabad, India 500038
+91 40 23751539
Email: info@avineonindia.com
URL: www.avineonindia.com

Avineon Europe Limited
4 Villiers Road, Kingston Upon Thames
Surrey KT1 3AR United Kingdom
+33 (0)1 43 14 65 12



Engineering Services



Avineon is an award winning engineering services company in operation since 1992. We employ industry best practices to produce high quality engineering solutions. Through insourcing or outsourcing via a virtual collaborative environment, Avineon delivers expertise globally from facilities in North America and India.



Process

Power

Offshore

Hydrocarbons

Water


www.avineon.com

Avineon Engineering Services

An ISO 9001:2000 Registered Company



Detailed Engineering

Avineon provides the detailed engineering services necessary to implement complex projects. Our engineers will validate your plans and document the supplies, equipment, and processes required to move from planning to procurement and construction. We routinely develop documentation such as Plot Plans, Piping and Instrumentation Diagrams (P&ID), Process Flow Diagrams (PFD), 2D/3D Models, Isometrics, Material Take Off (MTO), Bill of Materials (BOM), Line Lists, Hook-Ups, Loops, Datasheets, and reports

- ◇ Process Design
- ◇ Facility Integration
- ◇ Selection and Specification of Equipment
- ◇ Piping Design / Stress Analysis / Support Analysis and Implementation
- ◇ Electrical Design
- ◇ Instrumentation and Control Design
- ◇ 3D Model Optimization and De-bottlenecking
- ◇ Structural Design / Analysis
- ◇ Start-up and Commissioning
- ◇ Quality Control
- ◇ Project Management
- ◇ Construction Design Management
- ◇ Collaboration Management
- ◇ Walk Downs

Design

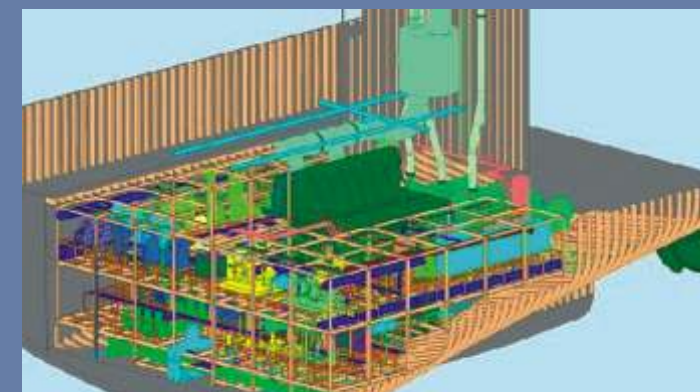
Avineon offers comprehensive Front End Engineering Design (FEED) and Basic Engineering Design (BED) services. From industry standard processes to licensed processes various technology providers, Avineon's engineers will apply the tools you require to develop an optimal solution.

- ◇ Feasibility Studies
- ◇ Process Evaluation / Selection
- ◇ Technology Licensor Liaison
- ◇ Loss Prevention / Hazards and Operability (HAZOP) Evaluations Plant Commissioning
- ◇ Plant Evaluation / Troubleshooting / Optimization
- ◇ Debottlenecking
- ◇ Utility Balance

CAD / PDA

Avineon's design and detailed engineering services are complemented by our expertise in Computer Aided Design (CAD) and Plant Design Automation (PDA). Not only do we incorporate such technology into all of our engineering operations, we will assist your staff in automating existing hard copy records. Avineon has extensive experience in all modern CAD and PDA tools, as well as the application of relational database softwares to enable intelligent queries of all of your project data.

- ◇ Legacy Data Conversion, Migration, and Integration
- ◇ 2D to 3D Modeling Conversion / Migration
- ◇ 3D Model Creation and Visualization
- ◇ Instrumentation Data Conversion / Migration
- ◇ Electrical Data Conversion / Migration
- ◇ Intelligent Piping and Instrumentation Diagram (P&ID), Process Flow Diagram (PFD) Creation
- ◇ As-Building and Maintenance
- ◇ Engineering Detail / Drafting Services
- ◇ CAD / PDA Software Training
- ◇ CAD / PDA Application Development



Disciplines

Avineon provides personnel for all major engineering disciplines including Piping, Process, Equipment, Structural, Electrical, Instrumentation, Foundation, and Civil. Our team members include engineers, engineering designers, and stress analysts.

OUTsourcing / INsourcing

Avineon's resources are available for both insourcing and outsourcing. Depending on your requirements, we will place qualified professionals on-site at your facility, provide interim outsourcing support, or establish a long-term, dedicated support group for your organization at our facility. We have the flexibility to support projects of any size, from short term staffing assignments to comprehensive design, detailed engineering, and maintenance services for large engineering projects.

Avineon's personnel are experienced in software that includes Intergraph PDS 2D & 3D, SmartPlant, FrameWorks, INtools, IDM, Electrical Raceway, AVEVA PDMS, Instrumentation, ProSteel, Bentley Rebis AutoPlant, PlantSpace, MicroStation, PRO-CAD, STAAD, AutoPipe, CAESAR, AutoCAD, CATIA, ProEngineer and ComputerVision.

Individual companies are registered owners of their respective trademarks.

Industries

Power

Serving both utility companies and independent power producers, our engineers are experienced in the development, operation, and maintenance of coal, oil, gas, and multi-fuel steam generation plants; simple and combined cycle gas turbines; and a variety of cogeneration plants.

Process

Avineon supports the design of systems, components, and processes for diverse manufacturing and service applications such as chemicals, pharmaceuticals, pulp/paper, metals, minerals, food, and beverages.

Offshore

Avineon supports fixed, floating, and undersea projects for oil companies and other industries with marine applications. In addition to stationary offshore structures and pipelines, many of our engineers have extensive experience in ship design and manufacture.

Hydrocarbon

Avineon provides upstream, midstream, and downstream engineering support for the petrochemical industry. We facilitate a complete array of engineering services for all petroleum and natural gas products. Avineon's experience spans Injection, SAGD, Compressors, Mining, Conveyance, and Refineries.

Water

Avineon supports the complete water distribution and recovery cycle including desalination, raw water treatment, pumping, and sewage treatment. Our experience includes plant design, residential and business customer distribution systems, storm water drainage networks, and environmental studies.